

HARRY CONNICK, JR. ASHLEY JUDD KRIS KRISTOFFERSON and MORGAN FREEMAN

# Dolphin Tale

IN 3D



Alcon Entertainment's *Dolphin Tale* is inspired by the amazing true story of a brave dolphin and the compassionate strangers who banded together to save her life.

Swimming free, a young dolphin is caught in a crab trap, severely damaging her tail. She is rescued and transported to the Clearwater Marine Hospital, where she is named Winter. But her fight for survival has just begun. Without a tail, Winter's prognosis is dire. It will take the expertise of a dedicated marine biologist, the ingenuity of a brilliant prosthetics doctor, and the unwavering devotion of a young boy to bring about a groundbreaking miracle—a miracle that might not only save Winter but could also help scores of people around the world. The real Winter, who plays herself in *Dolphin Tale*, today serves as a symbol of courage, perseverance and hope to millions of people—both able and disabled—who have been touched by her remarkable story of recovery and rehabilitation.

*Dolphin Tale* was filmed on location in Florida, including Winter's home at the Clearwater Marine Aquarium, whose motto is "Rescue, Rehabilitate and Return."

## Volunteer!

**Check online for interesting ways to volunteer in your neighborhood to help animals and to reduce our carbon footprint.**

Volunteers are an invaluable resource for many great causes and institutions.

Check your local SPCA, Humane Society or animal shelter for details.

There are also many environmentally friendly organizations that need volunteers.

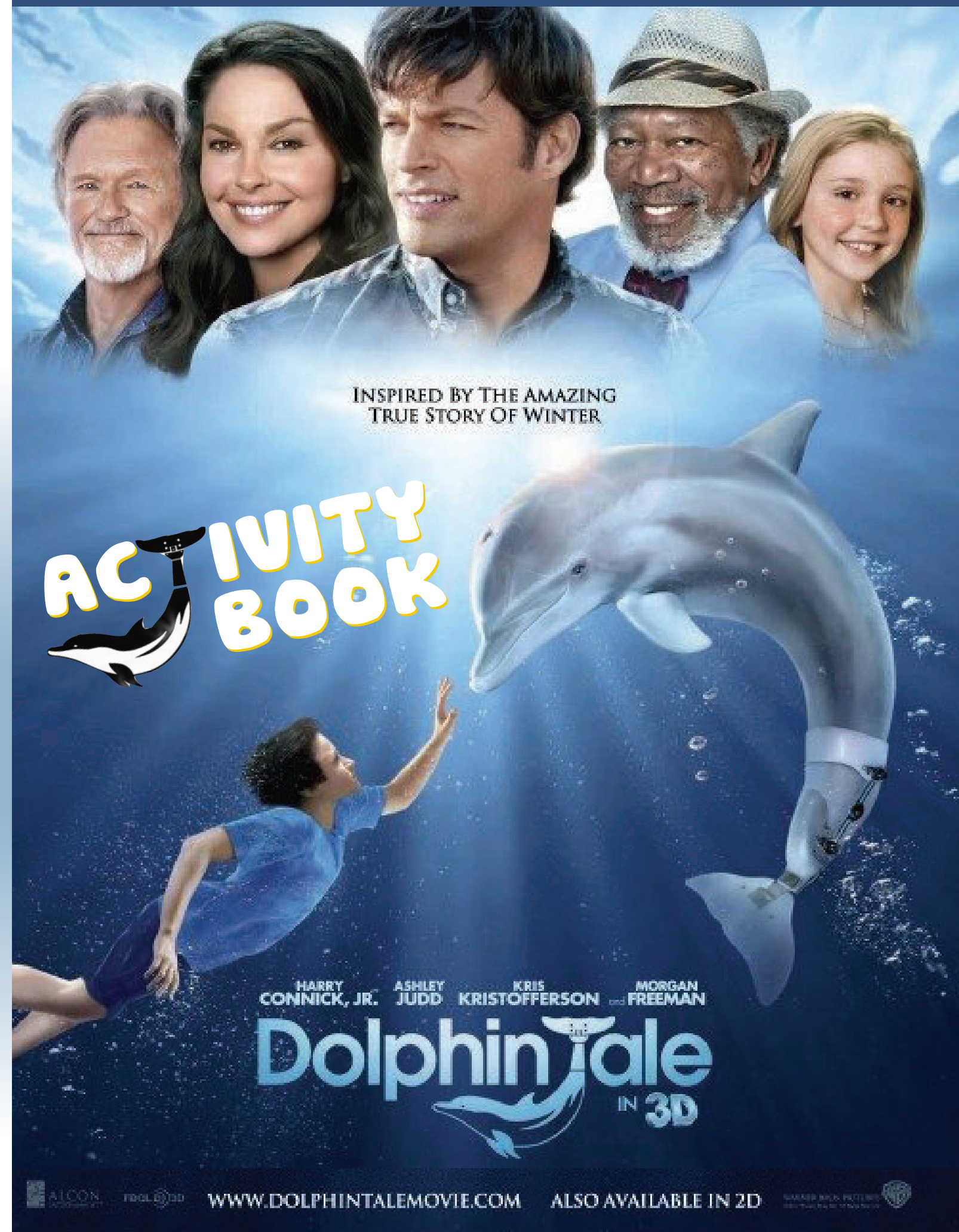
Search online for environmental volunteer opportunities

or look for youth volunteering services in your community.

**DONATE YOUR TIME TO MAKE YOUR COMMUNITY THE BEST IT CAN BE.**

**Dolphin Tale** ONLY IN THEATERS **SEPTEMBER 23**  
In 3D and 2D in select theaters

[www.dolphintalemovie.com](http://www.dolphintalemovie.com)



# Dolphin Fun Facts

- Dolphins are marine mammals that are closely related to whales and porpoises.
- There are nearly forty species of dolphin.
- Sometimes bottlenose dolphins use their tails to stun fish and then catch them easily.
- Dolphins have between 80 and 100 teeth but do not use them to chew their food.
- Dolphins only rest one side of their brain at a time.
- Winter is an Atlantic bottlenose dolphin, which is one of the most common species.
- Dolphins breathe through the blowhole at the top of their head.
- Bottlenose dolphins are extremely social, and live in groups called pods.
- Dolphins make clicking noises to navigate and hunt, bouncing high-pitched sounds off of objects, and listening for the echoes. This is called echolocation.



©2011 WBEI

# Draw the Tail on the Dolphin



What if you could put any kind of tail you wanted onto a dolphin?  
Be as colorful & fanciful as you can!

For more information about Winter and other cool dolphin sites, check out:

- [www.SeeWinter.com](http://www.SeeWinter.com)
- [www.dolphintalemovie.com](http://www.dolphintalemovie.com)
- [www.HomeschoolMovieClub.com/DolphinTale](http://www.HomeschoolMovieClub.com/DolphinTale)

# Winter's Word Search

See if you can find all ten of the following words:

M	I	W	S	M	L	J	B	R	V	M	R
Q	O	S	O	F	Z	A	Z	E	D	A	E
A	Q	U	A	R	I	U	M	Y	C	M	T
N	O	X	E	O	C	V	E	W	F	M	N
S	A	O	Z	Q	U	L	F	A	D	A	I
E	E	E	P	Z	R	I	H	S	O	L	W
S	U	I	C	Y	Z	A	C	F	L	Z	Z
U	Q	C	D	O	F	T	B	Z	P	Z	V
P	R	U	S	I	Q	H	V	H	H	O	C
R	D	T	I	E	T	N	H	I	I	F	Q
F	W	A	B	D	R	T	U	Z	N	N	M

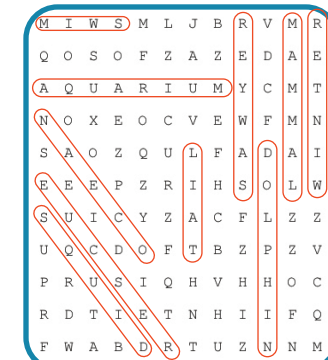
- aquarium
- dolphin
- mammal
- ocean
- rescue



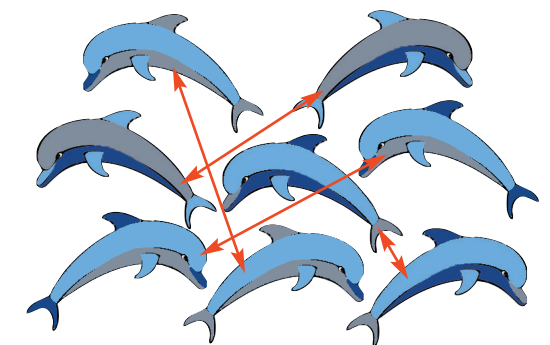
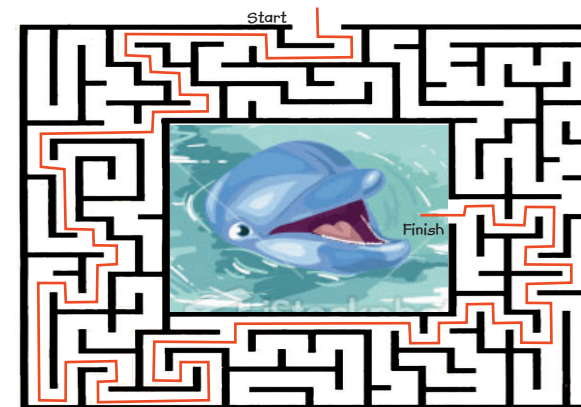
- Sawyer
- squid
- swim
- tail
- Winter

©2011 WBEI

# Answer Key



- Dolphin Smarts:
- dolphin
  - dorsal
  - blowhole
  - marine
  - bottlenose
  - aquarium



©2011 WBEI